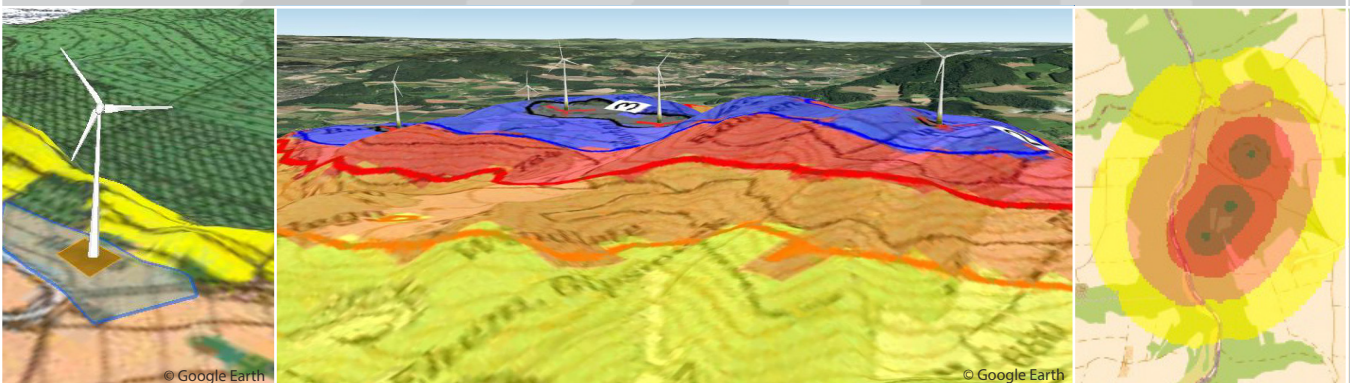


NOISE ASSESSMENT

Noise can be produced by many different causes and its impact on our health should not be underestimated. Therefore, it is even more important to carry out a proper investigation of sound and noise immissions.

Noise immissions that may arise through the operation of wind turbines, must be assessed and evaluated by adequate noise expertises already during the planning stage in accordance with the law. A building permission will be issued only, when in the noise expertise verifies that the tolerated emission thresholds won't be exceeded. The thresholds vary depending on the country and type of use of the adjacent buildings of a wind turbine site.

Choose us as a competent and strong partner providing professional assessments and expertises.



- Modelling of sound propagation with the software WindPRO according to ISO Norm 9613-2
- Analysis in line with noise pollution LSV (in Switzerland) or specified by international laws
- In-house developed calculation tool for faster calculation of sound phases
- Documentation of all relevant points of sound immission
- Our expertises have been accepted and are approved
- Different representations in 2D and 3D